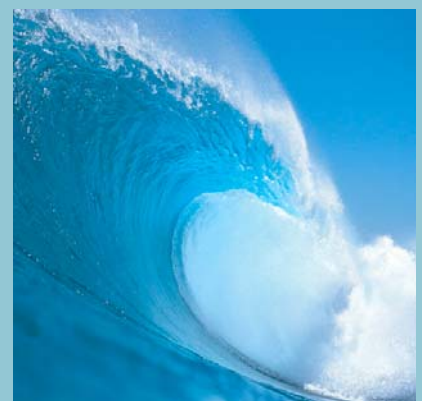
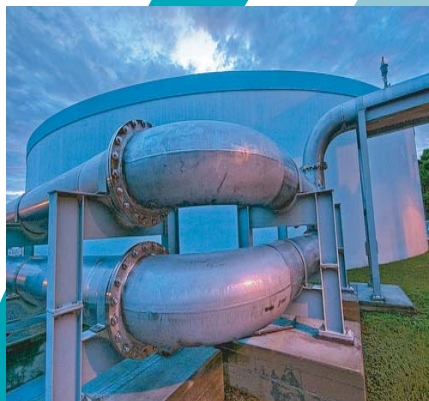


# Progressing Cavity Pumps Product Program Overview

High quality & service



## FM-S & FM-C Range Free Moulded Pump

Compact and versatile  
free moulded  
progressing cavity pump.  
Capacity: up to 10.000 l/h  
Pressure: up to 4 bar



## K Range Standard Pump

The range K it's the  
state of the art in  
manufacturing concepts  
Capacity: up to 250 m<sup>3</sup>/h  
Pressure: up to 48 bar



## M Range Metering pump

The Range M is used for  
metering different kind of  
liquids. High accuracy and  
low pulsation.

Capacity: from 4 l/h up to 18 l/h  
Pressure: up to 18 bar



## W Range Hopper Pump

The W Range was  
especially developed  
for pumping viscous products  
Capacity: from 500 l/h up to 80 m<sup>3</sup>/h  
Pressure: up to 48 bar

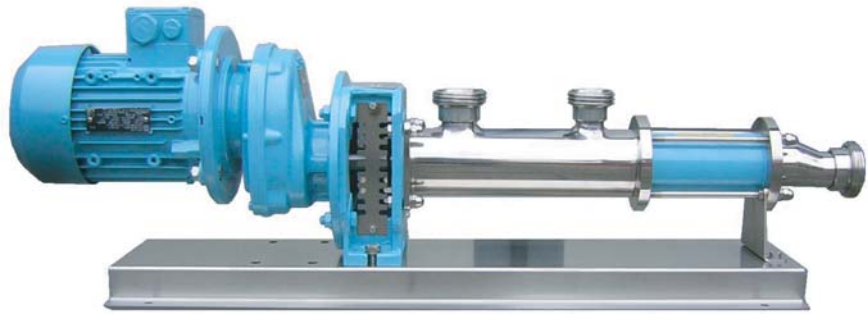


### **H Range Hygienic pump**

The Range H it's used mainly to apply in the food, pharmaceuticals and chemical industry

Capacity: up to 250 m<sup>3</sup>/h

Pressure: up to 24 bar



### **E Range Vertical Pump**

The Range E it's was projected to work in a vertical position

Capacity: up to 150 m<sup>3</sup>/h

Pressure: up to 12 bar

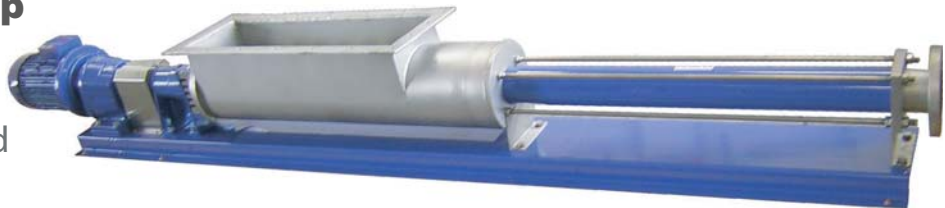


### **G Range Large Hopper pump**

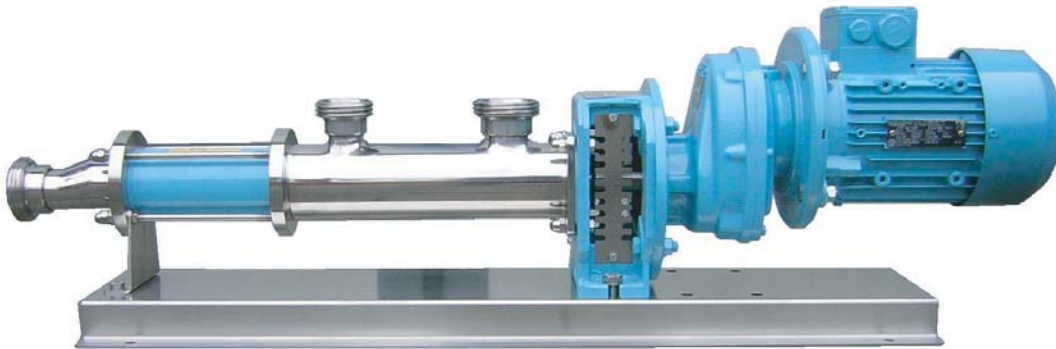
The G Range was especially developed for pumping viscous and no fluidity products

Capacity: up to 40 m<sup>3</sup>/h

Pressure: up to 48 bar



High Quality & Service



Your local authorised distributor:

High Quality & Service